

FAUSTO EMULATOR HOW TO

I-MARRIED CAM :



- 1.Insert cam in PCMCIA SLOT
- 2.The led stay on
- 3.Push Marriage button 1 time
- 4.Read & Yellow leds on cam will blink
- 5.Wait until leds stop to blink

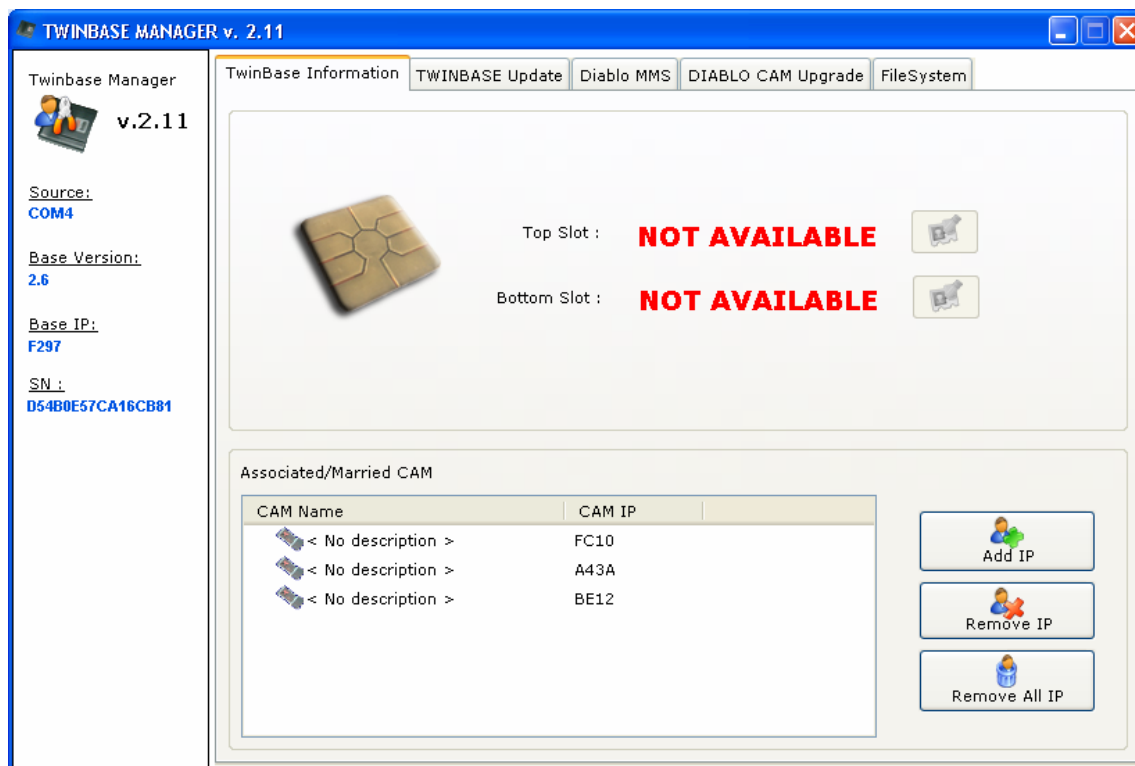
II-VERIFY BASE INFOS :

- 1.Insert cam on receiver
- 2.Go to Cam ci
- 3.Select Stealth Firmware
- 4.Select CAM INFO

If Base Married you show
CAM IP : XXXX
BASE IP : XXXX
BASE STATUS : Connected

If Not Married you'll show
CAM IP : XXXX
BASE IP : none
BASE STATUS : NOT Connected

Now Open Twinbase Manager
In main page you'll get



If your CAM IP not in list
Press button Add IP
Enter CAM IP showed in option CAM INFO on cam

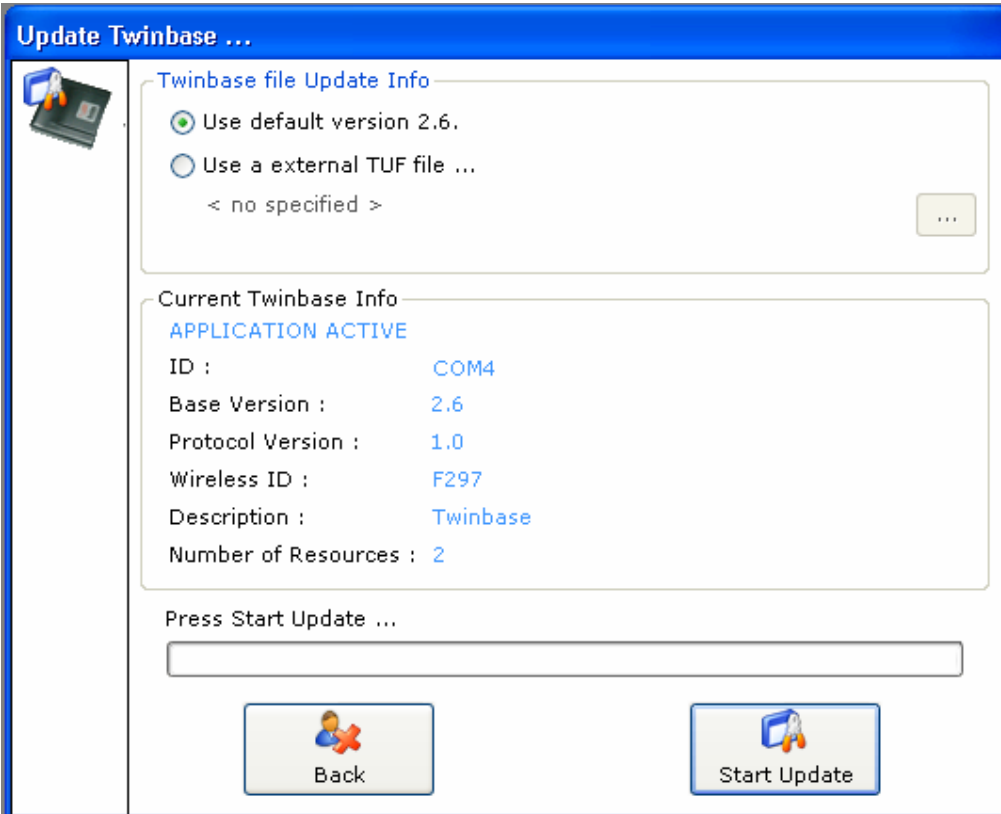
Base version must be 2.4 or higher (in screenshot 2.6 = ok)

To update base firmware

Press TABS TWINBASE Update

Press Button TWINBASE UPDATE

Press START UPDATE



The screenshot shows a software window titled "Update Twinbase ...". On the left is a sidebar with a small icon of a device. The main area contains two sections: "Twinbase file Update Info" and "Current Twinbase Info".

Twinbase file Update Info

- ☒ Use default version 2.6.
- ☐ Use a external TUF file ...
- < no specified > [...]

Current Twinbase Info

APPLICATION ACTIVE

ID :	COM4
Base Version :	2.6
Protocol Version :	1.0
Wireless ID :	F297
Description :	Twinbase
Number of Resources :	2

Press Start Update ...

[Progress Bar]

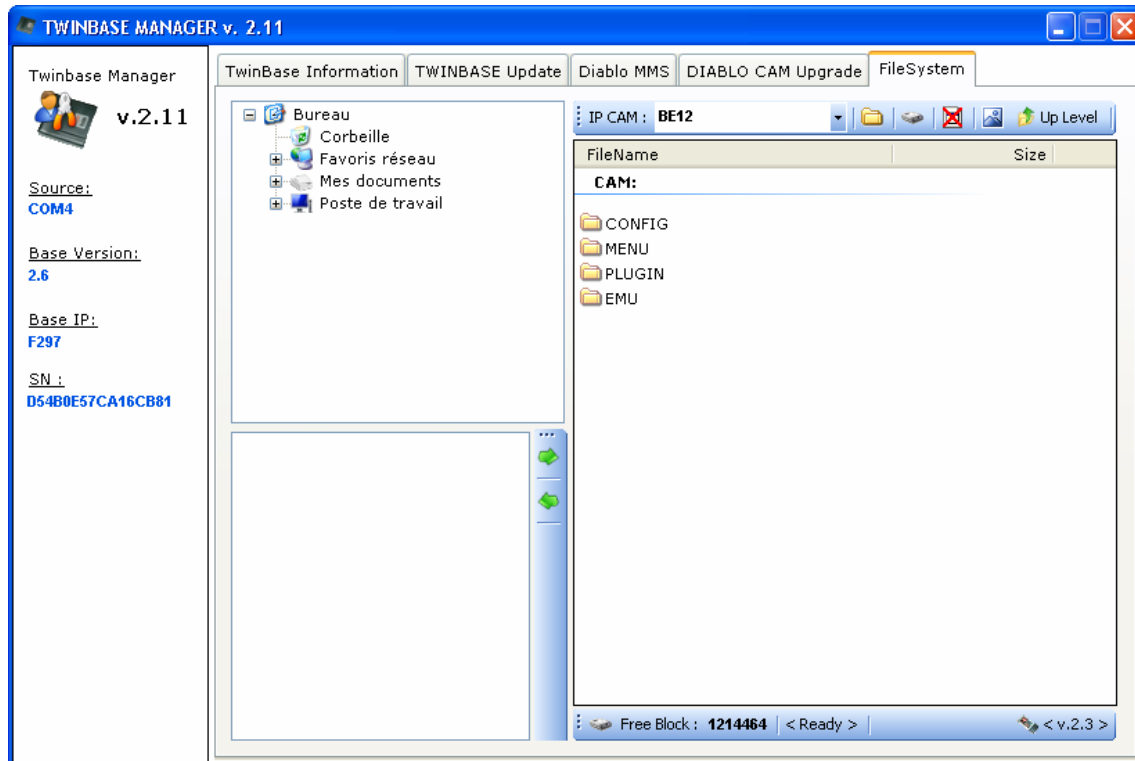
At the bottom are two buttons: "Back" (with a person and red X icon) and "Start Update" (with a person and blue checkmark icon).

Click on tabs FileSystem

Select IP CAM (it confirms too camera married correctly)

Delete File KEYS.BIN on main folder

It's possible to use « reduced » KEYS.BIN for camera with Fausto Emulator, but to start with how to, it's better to delete this file



III-CAM SETTINGS:

CONFIGURATION Option

EMULATOR = ON

AUTO PMT = OFF or ON (must be on for SECA1 chanel or will not be decrypted by Fausto)

Emulator ; no datas send to base)

DEBUG = ON (ecms send to base)

FIXED CW = OFF

SHOW MESSAGE >> never

IV-FAUSTO :

On receiver, select chanel encrypted

Run Fausto

Select Emulator function

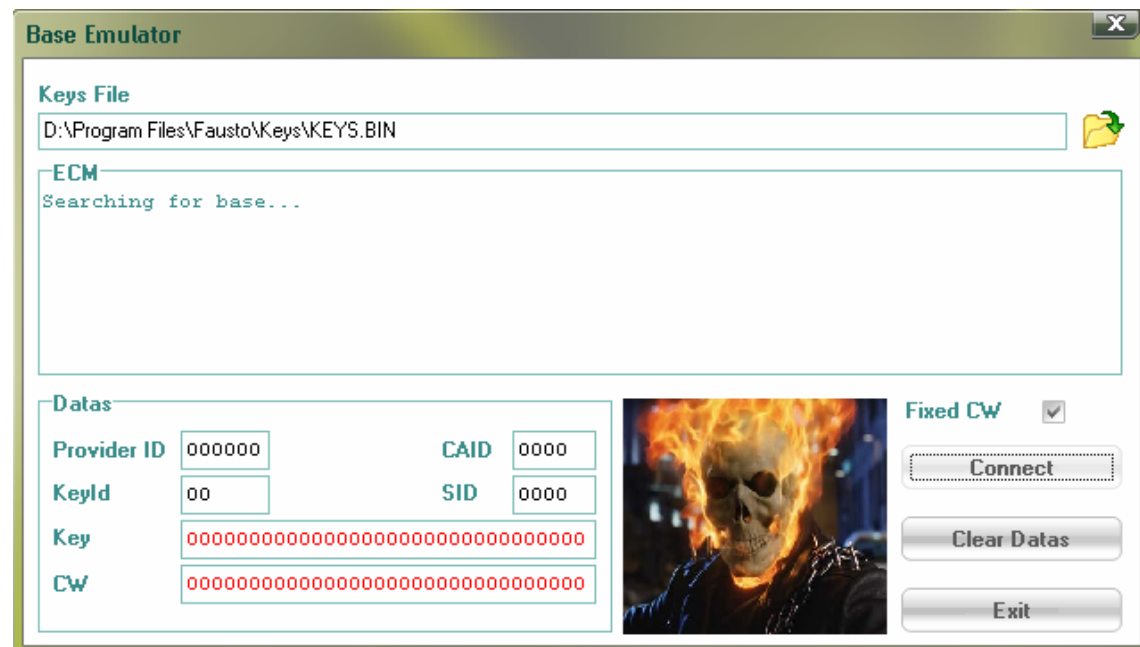
Load KEYS.BIN daily updated

Press Connect button (sometimes require 2 or 3 attempts)

Fausto will search the base (screenshot01)

Wait ECMs (screenshot02)

And Start decryption (screenshot03)



Base Emulator

Keys File


D:\Program Files\Fausto\Keys\KEYS.BIN

ECM

Base Found. Waiting ECMs...

Datas

Provider ID	000000	CAID	0000
KeyId	00	SID	0000
Key	00000000000000000000000000000000		
CW	00000000000000000000000000000000		



Fixed CW ☒

Disconnect

Clear Datas

Exit

Base Emulator

Keys File


D:\Program Files\Fausto\Keys\KEYS.BIN

ECM

BASE IP: F297 CAM IP: BE12
81304707454101860088474A1A638DB430824805367E90CBF6B1246035E40C0733CF8C0AE5DA060317AD57
6D9C37F058F7D5B848E9D1DBA395CC879D8F21C34C839B7AF64FEBE44CF6279B

Datas

Provider ID	004101	CAID	1801
KeyId	86	SID	768E
Key	3F3B4750CC6FBD421F894162FAA2B8F5		
CW	EA6559A8B9655F7D3F7B732D2FECDBF3		



Fixed CW ☒

Disconnect

Clear Datas

Exit